

OnlineComponents Cache Folder

The FactSet Workstation uses a technology called OnlineComponents to deliver the latest features, enhancements and bug fixes. OnlineComponents works seamlessly in the background without the need for administrative rights or any interaction from clients or their IT department. OnlineComponents does not alter the original FactSet installation in anyway.

What is OnlineComponents Cache Folder?

OnlineComponents Cache Folder allows the first user to cache a new FactSet release within a network folder after downloading it via the Internet. All subsequent users copy the latest update from the network folder, removing the need for each user to download directly over the Internet.

Benefits of OnlineComponents Cache Folder

- Significantly reduces the total Internet bandwidth required for OnlineComponents downloads. Instead of every user downloading the latest overlay over the Internet, only one download is required.
- Vastly reduces the time it takes for individual users to download the latest release. On average, a download directly from FactSet’s servers over the Internet takes approximately 4 hours (downloads over the Internet are throttled), using OnlineComponents Cache Folder potentially reduces this process to just a few minutes.
- Upgrading quickly ensures FactSet users are on the latest FactSet release and therefore taking advantage of the latest features and enhancements for the FactSet Workstation.
- FactSet automatically populates, repairs and removes OnlineComponents overlays as needed from within the OnlineComponents Cache Folder. Once setup there is no need for any maintenance of this folder by clients or their IT staff. Each OnlineComponents overlay is deleted if it has not been accessed within a specific time period.

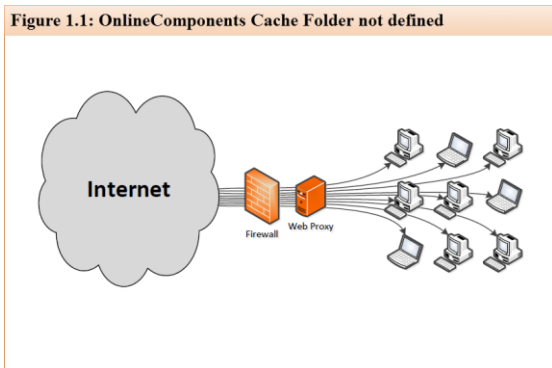


Figure 1.1 illustrates each user downloading an OnlineComponents overlay via the Internet, averaging a download time of 4-6 hours.

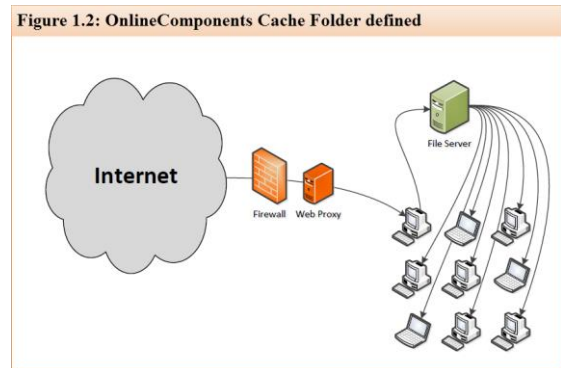


Figure 1.2 illustrates the first user downloading the OnlineComponents overlay via the Internet and all subsequent users copying that overlay from the local cached copy over the LAN.

Requirements

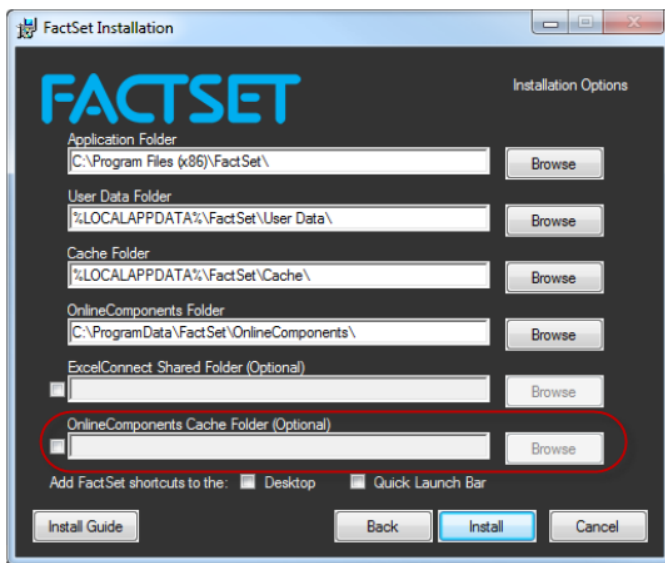
FactSet recommends at least 10GB of available storage should be reserved for the OnlineComponents Cache Folder, all FactSet users will need modify permissions to this folder.

For clients with geographically dispersed offices, FactSet recommends using non-replicating DFS (Distributed File System) shares for the OnlineComponents Cache Folder. To avoid download conflicts, DFS replication should not be used.

For further information on how to use DFS with OnlineComponents Cache Folder, please contact Technology Solutions Engineering at FactSet via techsolutions@factset.com

How to configure OnlineComponents Cache Folder

Interactive installation –The OnlineComponents Cache Folder is defined during the installation by checking the ‘OnlineComponents Cache Folder (Optional)’ checkbox and entering an appropriate network location.



Unattended or silent installation - The Online Components Cache Folder can be defined using the FACTSET_OCNETWORKDIR Public Property. This property can be set within the Properties table of the MSI or as part of the command line used to install FactSet.

After installation – The Online Components Cache Folder can be set or modified via the below relevant registry keys.

Windows 32-bit:

[HKEY_LOCAL_MACHINE\SOFTWARE\FactSet\File Locations\] "OCNetworkDir"

Windows 64-bit and FactSet 32-bit MSI:

[HKEY_LOCAL_MACHINE\SOFTWARE\WOW6432Node\FactSet\File Locations\] "OCNetworkDir"

Windows 64-bit and FactSet 64-bit MSI:

[HKEY_LOCAL_MACHINE\SOFTWARE\FactSet\File Locations\] "OCNetworkDir"

[HKEY_LOCAL_MACHINE\SOFTWARE\WOW6432Node\FactSet\File Locations\] "OCNetworkDir"

For further information, please contact Technology Solutions Engineering at FactSet via techsolutions@factset.com